



ST. TAMMANY PARISH

MICHAEL B. COOPER
PARISH PRESIDENT

October 4, 2021

Please find the following addendum to the below mentioned BID.

Addendum No.: 3

Bid#: 21-26-2

Project Name: Slidell Library Parking Lot

Bid Due Date: 10/12/2021

GENERAL INFORMATION:

AD3.1 Project Manual, Section 02114, Temporary Erosion Control. Add the following note at the end of the Section:

“See attached Attachment A for DOTD Standards.”

This attachment is included and numbered AD3-4 thru AD3-5.

AD3.2 Project Manual, Section 02514, Portland Cement Concrete Paving: Delete this section in its entirety.

AD3.3 Project Manual, Section 02515, Portland Cement Concrete Paving: Add this section in its entirety numbered AD3-6.

AD3.4 Drawings, Sheet No. 2, General Notes and Legend. General Notes, Note No. 19. Delete this note in its entirety and replace with the following:

19. PORTLAND CEMENT CONCRETE USED FOR PARKING LOT AND DRIVEWAYS SHALL BE "TYPE B" PER SECTION 706 IF THE LOUISIANA STANDARD SPECIFICATIONS FOR ROADS AND BRIDGES. PORTLAND CEMENT CONCRETE USED FOR SIDEWALKS SHALL BE "TYPE M" PER SECTION 706 IF THE LOUISIANA STANDARD SPECIFICATIONS FOR ROADS AND BRIDGES. ALL CONCRETE PAVEMENT IN THE CITY OF SLIDELL

PROCUREMENT DEPARTMENT
P.O. BOX 628 | COVINGTON, LOUISIANA | 70434 | PROCUREMENT@STPGOV.ORG | 985-898-2520

WWW.STPGOV.ORG

Version 2020 Q1



ST. TAMMANY PARISH

MICHAEL B. COOPER
PARISH PRESIDENT

RIGHT OF WAY SHALL HAVE FIBER REINFORCEMENT (1 BAG/YARD) IN THE CONCRETE MIXTURE.”

AD3.5 Drawings, Sheet No. 2, General Notes and Legend, Traffic Notes, Note No. 4:
Delete this note in its entirety and replace with the following:

4. CONTRACTOR SHALL COORDINATE WITH CITY OF SLIDELL AND LADOTD ON THE PLACEMENT OF TEMPORARY TRAFFIC CONTROL DEVICES DURING CONSTRUCTION.

AD3.6 Drawings, Sheet No. 2, General Notes and Legend, Traffic Notes, Note No. 14:
Delete this note in its entirety and replace with the following:

14. CONTRACTOR SHALL NOTIFY CITY OF SLIDELL AND LADOTD A MINIMUM OF 15 WORKING DAYS PRIOR TO IMPLEMENTING ANY ROAD/LANE CLOSURE.

AD3.7 Drawings, Sheet No. 2, General Notes and Legend, Traffic Notes, Note No. 15:
Delete “ST. TAMMANY PARISH FACILITIES MANAGEMENT” and replace with “CITY OF SLIDELL AND LADOTD”.

AD3.8 Drawings, Sheet No. 6, Drainage & Grading Plan. Delete this sheet in its entirety and replace with Sheet No. 6, Drainage & Grading Plan numbered AD3-7.

AD3.9 Drawings, Sheet No. 7, Miscellaneous Details. Add Sketch SK-01 & SK-02, Slidell Standard Sidewalk Details numbered AD3-8 thru AD3-9.

AD3.10 Drawings, Sheet No. 8, Miscellaneous Details: Delete this sheet in its entirety and replace with Sheet No. 8, Miscellaneous Details numbered AD3-10.

AD3.11 Drawings, Sheet No. E1, Electrical Site Plan, General Notes this Sheet, Note B. Add “Gardco” to the list of approved light fixture manufacturers as indicated in the attached letter numbered AD3-11.

AD3.12 Bidder’s Questions (Q & A):

Q1: Specification section 01530 calls for a construction fence around the site throughout the project. Is this required?

A1: *Yes, type of fencing shall be determined by the Contractor to secure job site.*

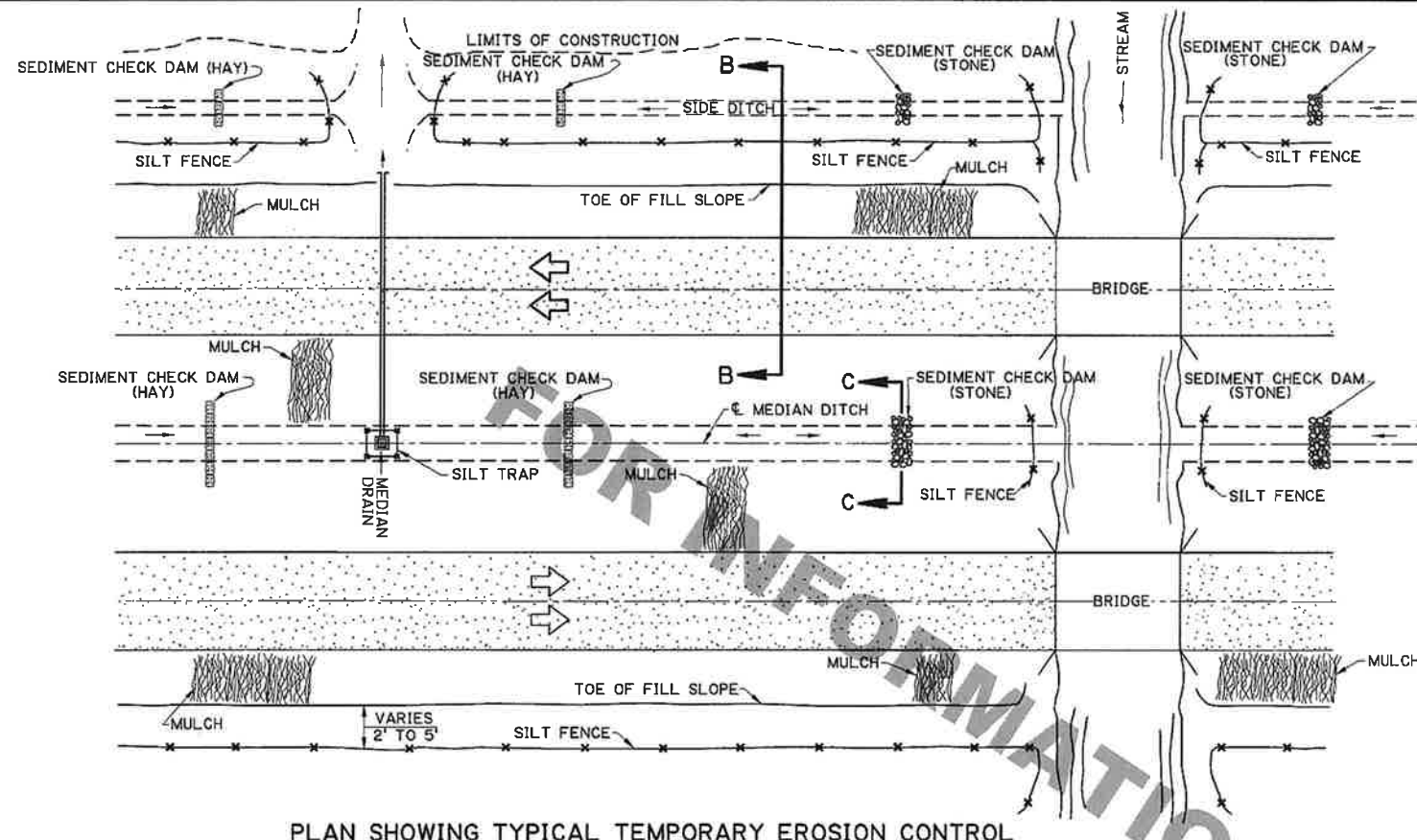


ST. TAMMANY PARISH

MICHAEL B. COOPER
PARISH PRESIDENT

- Q2: Specification section 02514 only lists a hi-early strength concrete. Will a 28-day 4000 psi concrete be allowed? And will a wra be allowed to increase slump for the paving?
- A2: *See Addendum Item AD3.2, AD3.3 and AD3.4. Contractor shall follow DOTD standards for mix requirements.*

<< End of Addendum #3 >>

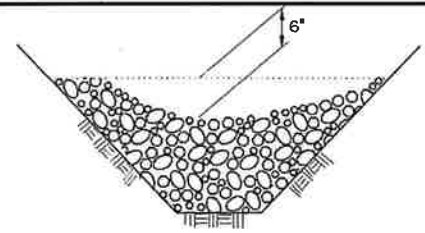


PLAN SHOWING TYPICAL TEMPORARY EROSION CONTROL

MULCHES

MULCHES ARE THE APPLICATION OF MATS OF MATERIAL PLACED ON THE SOIL SURFACE TO PREVENT EROSION BY PROTECTING THE SOIL SURFACE FROM RAINDROP IMPACT AND TO REDUCE THE VELOCITY OF OVERLAND FLOW. MULCHES CAN BE ORGANIC OR SYNTHETIC. MULCHES SHALL BE IN ACCORDANCE WITH PROJECT SPECIFICATIONS FOR TEMPORARY EROSION CONTROL. A FEW GUIDELINES FOR THE USE OF MULCHES ARE:

1. USE ON CUT AND EMBANKMENT SLOPES WHICH HAVE NOT BEEN COMPLETED TO PLAN GRADE OR WHERE THE WEATHER OR SOIL CONDITIONS WILL NOT PERMIT COMPLETING THEM WITHIN A REASONABLE TIME
2. USE ON CLEARED, GRUBBED, AND SCALPED AREAS WHERE SOIL EROSION IS LIKELY TO OCCUR
3. USE WITH TEMPORARY SEEDING



SECTION C-C

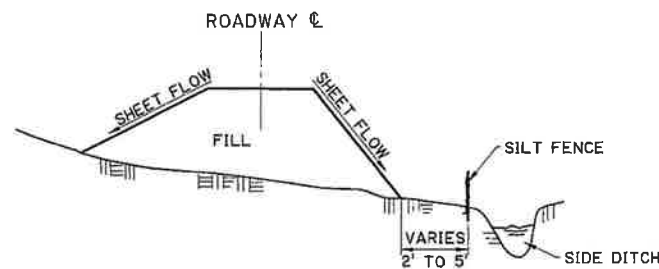
TEMPORARY SEDIMENT CHECK DAM (STONE)

PAY ITEM: TEMPORARY SEDIMENT CHECK DAM (STONE)

NOTES:

A STONE CHECK DAM IS A SMALL TEMPORARY DAM CONSTRUCTED ACROSS A SWALE OR DRAINAGE DITCH. THE PURPOSE OF THIS MEASURE IS TO REDUCE THE VELOCITY OF CONCENTRATED STORM WATER FLOWS, THEREBY REDUCING EROSION OF THE SWALE OR DITCH. THE STONE CHECK DAM WILL TRAP SMALL AMOUNTS OF SEDIMENTS GENERATED IN THE DITCH ITSELF, HOWEVER IT SHOULD NOT BE USED AS A SEDIMENT TRAPPING DEVICE. A FEW BASIC DESIGN GUIDELINES FOR THE USE OF STONE CHECK DAMS ARE:

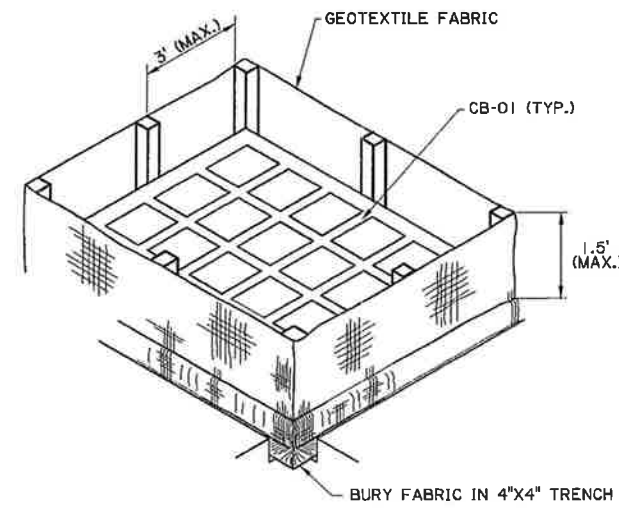
1. USE IN SMALL OPEN CHANNELS WHICH DRAIN 10 ACRES OR LESS
2. DO NOT USE IN A LIVE STREAM
3. USE IN A TEMPORARY DITCH OR SWALE WHICH, BECAUSE OF THEIR SHORT LENGTH OF SERVICE, CANNOT RECEIVE A NON-ERODIBLE LINING
4. USE IN PERMANENT DITCHES OR SWALES WHICH WILL NOT RECEIVE A PERMANENT LINING FOR AN EXTENDED PERIOD OF TIME
5. USE IN TEMPORARY OR PERMANENT DITCHES OR SWALES WHICH NEED PROTECTION DURING THE ESTABLISHMENT OF GRASS LININGS
6. FOR STONE SPECIFICATIONS, SEE PROJECT SPECIFICATIONS FOR RIPRAP, (CLASS 2 LB)



SECTION B-B

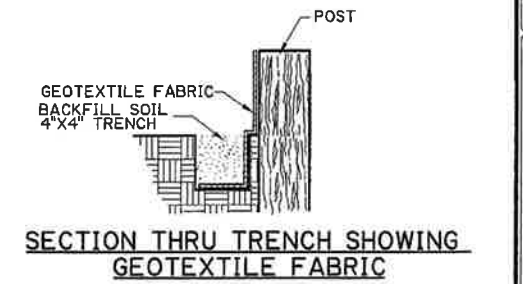
TEMPORARY SILT FENCE APPLICATION

(FOR CONSTRUCTION DETAILS AND SPECIFICATIONS SEE SHEET 2 OF 2.)

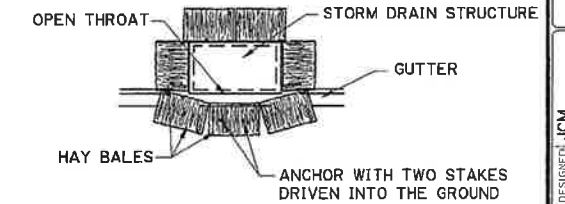


ISOMETRIC VIEW SHOWING GEOTEXTILE FABRIC

(BACKFILL SOIL NOT SHOWN)



SECTION THRU TRENCH SHOWING GEOTEXTILE FABRIC



PLAN SHOWING HAY BALES

PAY ITEM: TEMPORARY HAY OR STRAW BALES

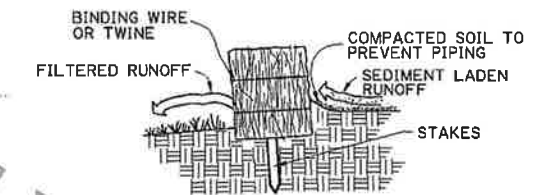
TEMPORARY INLET SILT TRAP

THE TEMPORARY DROP INLET SILT TRAP IS TO BE USED FOR SMALL DRAINAGE AREAS (LESS THAN 1 ACRE) WHERE THE STORM DRAIN IS FUNCTIONAL BEFORE THE AREA IS STABILIZED. THE TRAP CAN BE EITHER GEOTEXTILE FABRIC OR HAY BALES.

1. THE GEOTEXTILE FABRIC SHALL CONFORM TO PROJECT SPECIFICATIONS FOR GEOTEXTILE FABRIC (CLASS G).
2. WOODEN STAKES SUPPORTING THE FABRIC SHALL BE 2" X 2" OR 2" X 4" WITH A MINIMUM LENGTH OF 3 FEET. THE STAKES SHALL BE SPACED AROUND THE INLET AT A MAXIMUM SPACING OF 3 FEET.
3. THE HEIGHT OF THE FABRIC ABOVE THE INLET SHALL BE LIMITED TO 1.5' AND THE BOTTOM OF THE FABRIC SHALL BE BURIED IN A TRENCH APPROXIMATELY 4" WIDE BY 4" DEEP. THE FABRIC SHALL BE STAPLED TO THE POST WITH 1/2" STAPLES.
4. THE TRAP SHOULD BE INSPECTED REGULARLY AND AFTER EACH STORM. THE SEDIMENT SHOULD BE REMOVED AND EACH STAKE SHOULD BE FIRMLY IN THE GROUND.
5. HAY BALES SHALL BE PLACED SO THAT THE BINDING WIRE OR TWINE IS NOT IN CONTACT WITH THE GROUND.



ELEVATION



SECTION A-A

TEMPORARY SEDIMENT CHECK DAM (HAY)

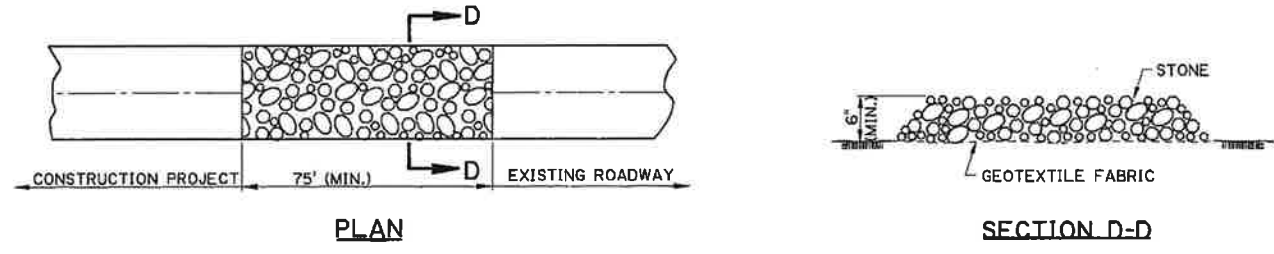
PAY ITEM: TEMPORARY SEDIMENT CHECK DAM (HAY)

NOTES:

A HAY BALE BARRIER IS A TEMPORARY SEDIMENT BARRIER CONSISTING OF A ROW OF ENTRENCHED AND ANCHORED BALES OF STRAW OR HAY. THE HAY BALE BARRIER IS ALSO USED AS A CHECK DAM TO REDUCE THE VELOCITY IN SMALL DITCHES OR SWALES. THE HAY BALES SHALL BE IN ACCORDANCE WITH PROJECT SPECIFICATIONS FOR TEMPORARY EROSION CONTROL. A FEW BASIC DESIGN GUIDELINES FOR THE USE OF A HAY BALE BARRIER ARE:

1. USE WHERE EROSION WILL OCCUR IN THE FORM OF SHEET AND RILL EROSION
2. USE IN MINOR SWALES OR DITCHES WHERE THE MAXIMUM DRAINAGE AREA IS 2 ACRES
3. ONLY USE WHERE THE EFFECTIVENESS IS REQUIRED FOR LESS THAN 3 MONTHS
4. DO NOT USE IN LIVE STREAMS OR IN SWALES OR DITCHES WHERE THERE IS A POSSIBILITY OF A WASHOUT

SHEET NUMBER	1 OF 2
PARISH	ORLEANS
FEDERAL PROJECT	KAJ
STATE PROJECT	1-14-94
DESIGNED BY	JCM
CHECKED BY	JCM
DATE	1-14-94
SHEET	1 OF 2
REVISION NO.	10-1-08
REVISION DESCRIPTION	REMOVE SPECIFIC PAY ITEM NOS., GENERAL REVISIONS
APPROVED BY	W. H. Temple
CHIEF ENGINEER	
TEMPORARY EROSION CONTROL DETAILS	EC-01
HYDRAULICS SECTION	



TEMPORARY STONE CONSTRUCTION ENTRANCE

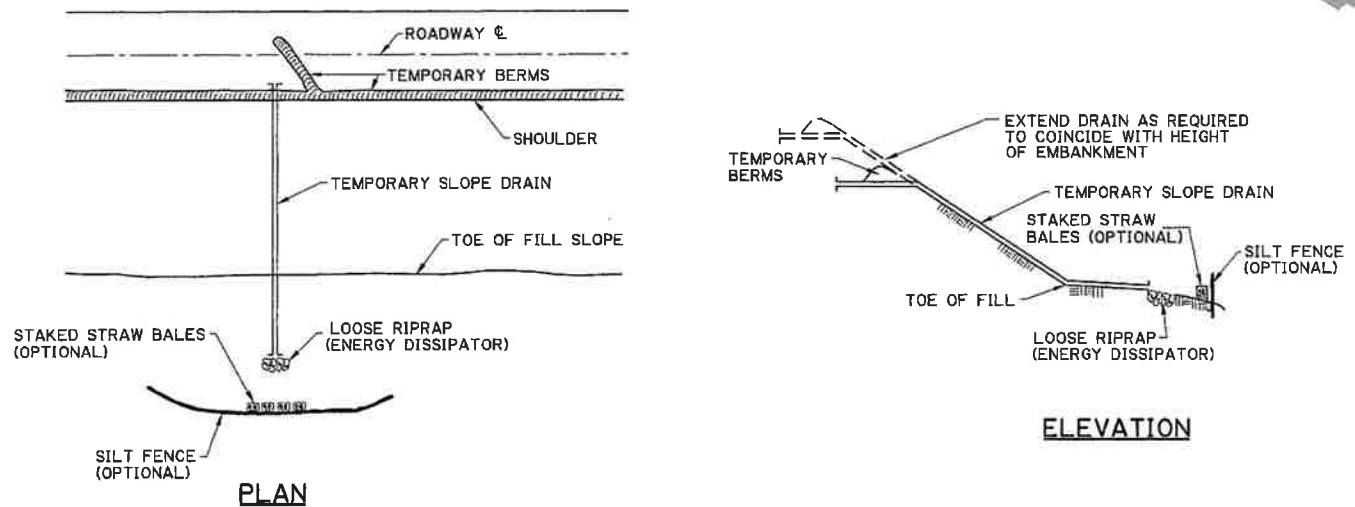
PAY ITEM: TEMPORARY STONE CONSTRUCTION ENTRANCE

NOTES:

TEMPORARY STONE CONSTRUCTION ENTRANCE AND/OR WASH RACK

A STONE STABILIZED PAD LOCATED AT POINTS OF VEHICULAR INGRESS AND EGRESS ON THE CONSTRUCTION SITE TO REDUCE THE AMOUNT OF MUD TRANSPORTED ONTO PUBLIC ROADS. IF THE ACTION OF THE VEHICLE TRAVELING OVER THE GRAVEL PAD IS NOT SUFFICIENT TO REMOVE THE MAJORITY OF THE MUD, THEN THE TIRES MUST BE WASHED BEFORE THE VEHICLE ENTERS A PUBLIC ROAD. A FEW BASIC DESIGN GUIDELINES FOR THE USE OF A STONE ENTRANCE AND/OR WASH RACKS ARE:

1. THE STONE LAYER MUST BE AT LEAST 6 INCHES THICK.
2. THE STONE SHALL CONFORM TO PROJECT SPECIFICATIONS FOR RIPRAP (CLASS 2 LB).
3. THE LENGTH OF THE PAD MUST BE A LEAST 75 FEET AND IT MUST EXTEND THE FULL WIDTH OF THE VEHICULAR INGRESS AND EGRESS.
4. A GEOTEXTILE FABRIC UNDERLINER IS REQUIRED. THE GEOTEXTILE FABRIC SHALL BE IN ACCORDANCE WITH PROJECT SPECIFICATIONS FOR GEOTEXTILE FABRIC (CLASS D).
5. IF A WASH RACK IS NECESSARY, PROVISIONS MUST BE MADE TO INTERCEPT THE WASH WATER AND TRAP THE SEDIMENT BEFORE IT IS CARRIED OFF-SITE.

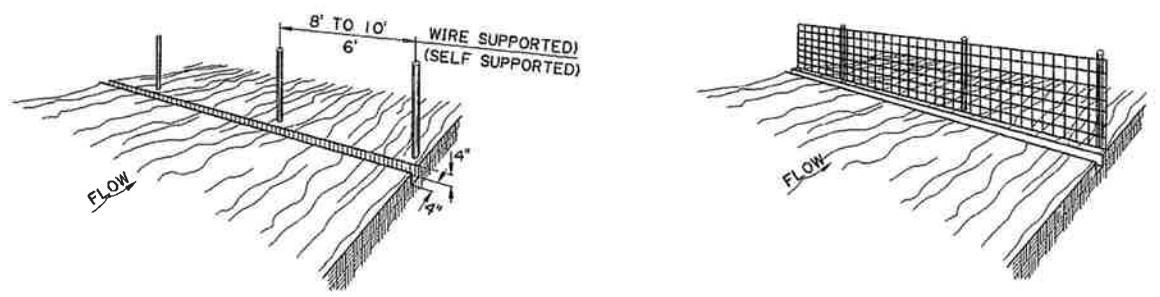


TEMPORARY SLOPE DRAIN

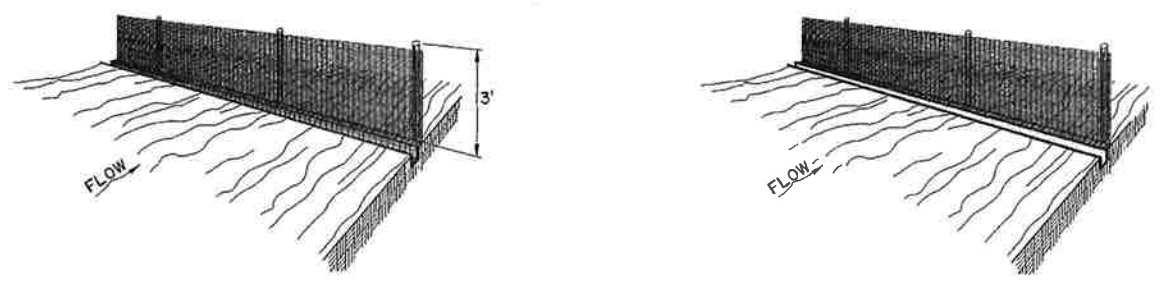
A TEMPORARY SLOPE DRAIN IS A DEVICE USED TO CARRY WATER FROM THE CONSTRUCTION WORK AREA TO A LOWER ELEVATION. SLOPE DRAINS MAY BE PLASTIC SHEET, METAL OR PLASTIC PIPE, STONE GUTTERS, FIBER MATS, OR CONCRETE OR ASPHALT DITCHES. A FEW BASIC DESIGN GUIDELINES FOR THE USE OF A TEMPORARY SLOPE DRAIN ARE:

1. THE SPACING OF THE SLOPE DRAINS VARIES WITH THE ROAD GRADE.
FOR GRADES:
0.0% - 2.0% USE 500' SPACING
2.1% - 5.0% USE 200' SPACING
GREATER THAN 5.0% USE 100' SPACING
2. SLOPE DRAIN MATERIAL: SMOOTH PIPE - 8" MINIMUM - 3 MILS THICK MIN.
CORRUGATED PIPE - 12" MINIMUM
PLASTIC SHEETING - 4' WIDE MINIMUM
PLASTIC SHEETING - 3 MILS THICK MIN.
3. PLASTIC SHEETING CAN BE STAKED DOWN OR WEIGHTED WITH ROCKS OR LOGS. THE AREA UNDER THE SHEETING SHOULD BE SHAPED TO PROVIDE AN ADEQUATE CHANNEL.
4. THE OUTLET END SHOULD BE PROTECTED OR HAVE SOME MEANS OF DISSIPATING ENERGY. THE FLOW SHOULD BE DIRECTED THROUGH A SEDIMENT TRAP SUCH AS A SILT FENCE, HAY BALES, OR OTHER APPROVED SEDIMENT CONTROL DEVICES.
5. TO INSURE PROPER OPERATION, TEMPORARY SLOPE DRAINS SHOULD BE INSPECTED REGULARLY AND AFTER EACH STORM, FOR CLOGGING OR DISPLACEMENT. EROSION AT THE OUTLET SHOULD BE CHECKED AND THE SILT TRAPS CLEANED IF NECESSARY.

1. SET POSTS AND EXCAVATE A 4" X 4" TRENCH UPSLOPE ALONG THE LINE OF POSTS.
2. STAPLE WIRE FENCING TO THE POSTS.



3. ATTACH THE FILTER FABRIC TO THE WIRE FENCE AND EXTEND IT INTO THE TRENCH.
4. BACKFILL AND COMPACT EXCAVATED SOIL.



CONSTRUCTION OF TEMPORARY SILT FENCING

(WIRE SUPPORTED SILT FENCE IS SHOWN. SELF SUPPORTED SILT FENCE WILL BE CONSTRUCTED ACCORDING TO MANUFACTURERS SPECIFICATIONS.)

NOTES:

SILT FENCING IS A TEMPORARY SEDIMENT BARRIER CONSISTING OF A FILTER FABRIC SUPPORTED BY POSTS AND STRETCHED ACROSS AN AREA TO INTERCEPT AND DETAIN SMALL AMOUNTS OF SEDIMENT. THE SILT FENCING SHALL BE IN ACCORDANCE WITH PROJECT SPECIFICATIONS FOR TEMPORARY EROSION CONTROL. A FEW BASIC GUIDELINES FOR THE USE OF SILT FENCING ARE:

1. USE WHERE EROSION WOULD OCCUR IN THE FORM OF SHEET AND RILL EROSION
2. USE WHERE THE MAXIMUM DRAINAGE AREA BEHIND THE SILT FENCE IS 1/4 ACRE PER 100 FEET OF SILT FENCE LENGTH
3. USE WHERE THE MAXIMUM SLOPE LENGTH BEHIND THE BARRIER IS 100 FEET
4. USE WHERE THE MAXIMUM GRADIENT BEHIND THE BARRIER IS 2:1
5. DO NOT USE SILT FENCES IN LIVE STREAMS OR IN DITCHES OR SWALES WHERE FLOWS EXCEED ONE CUBIC FOOT PER SECOND

SHEET NUMBER	PARISH	DESIGNED BY	DATE
	FEDERAL PROJECT	CHECKED BY	
	STATE PROJECT	DATE	1-14-94
		SHEET	2 OF 2
REVISIONS		DATE	
10-1-08	REMOVE SPECIFIC PAY ITEM NOS., GENERAL REVISIONS	MH	10-1-08
APPROVED BY		DATE	
CHIEF ENGINEER: <i>W. H. Temp</i>			
TEMPORARY EROSION CONTROL DETAILS			
HYDRAULICS SECTION			

SECTION 02515: PORTLAND CEMENT CONCRETE PAVING

PART 1: GENERAL

- 1.1 Related Documents: The general provisions of the Contract, including the conditions of the Contract (General, Supplementary, and other conditions, Division 0), and Division 1 as appropriate, apply to the Work specified in this Section.
- 1.2 Scope of Work: Furnish all necessary materials, labor and equipment for the complete installation of all portland cement concrete paving work, as shown on the Drawings and specified herein. Provide all necessary supplementary items for a complete installation intended by documents.
- 1.3 Provisions:
- A. All work shall comply with applicable provisions of the State of Louisiana Department of Transportation and Development latest edition "Louisiana Standard Specifications for Roads and Bridges" (DOTD), except as modified herein.
 - B. Where DOTD is modified herein, unaltered provisions of standard specifications shall remain in effect.
 - C. Where general provisions (General, Supplementary Conditions, etc.) of this specification conflict with DOTD, this specification shall govern. DOTD provisions not affected shall remain as part of contract.
 - D. Whenever the "Department" is referenced in DOTD, change to read the "A/E" and/or the "Owner" as applicable throughout.

PART 2: PRODUCTS

- 2.1 Materials: All materials shall comply with the DOTD sections entitled "Portland Cement Concrete Pavement", "Concrete Walks, Drives, and Incidental Paving", and "Curbs and Gutters", and "Base Course" as required. Fly ash will not be allowed in the concrete mix.

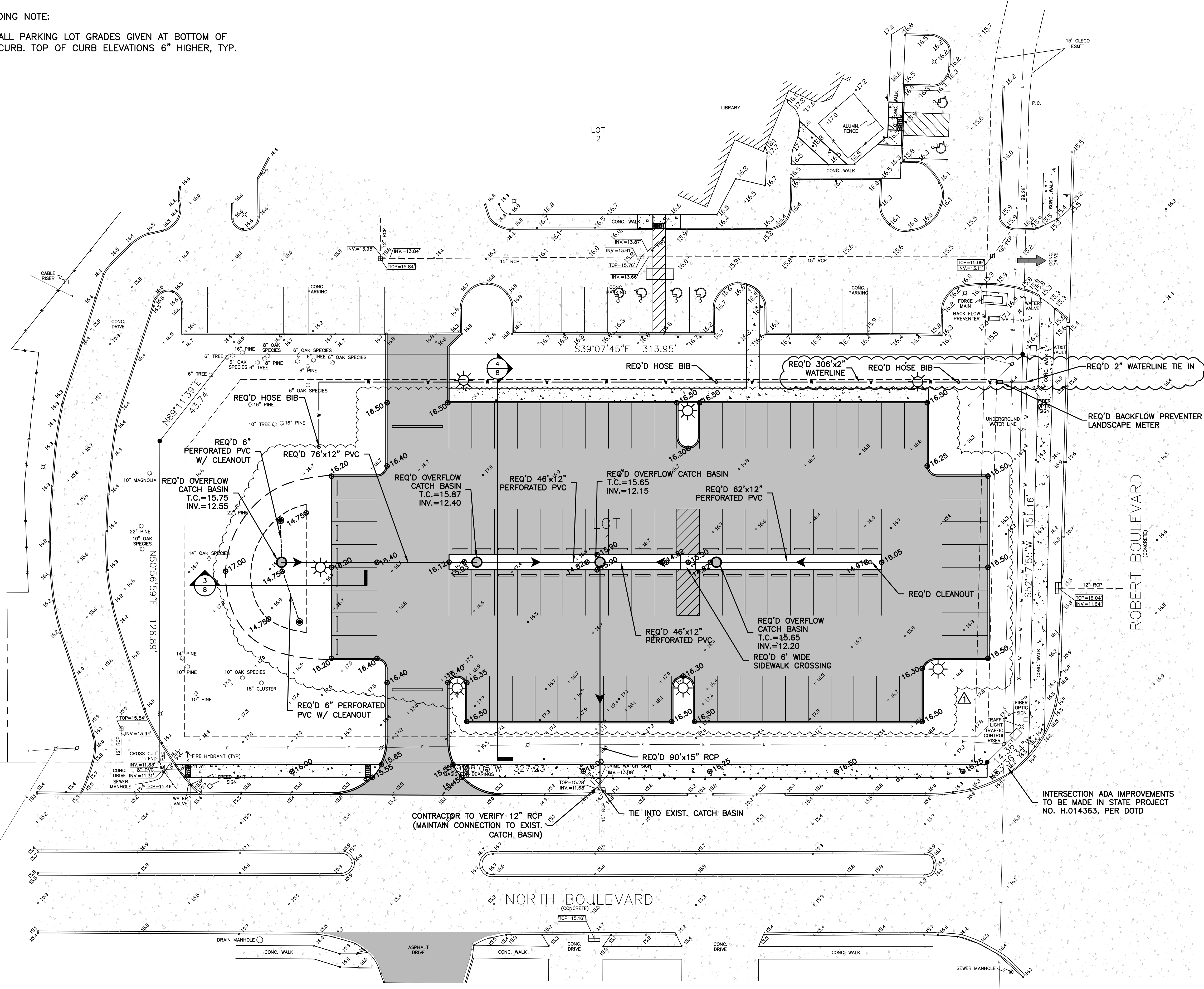
PART 3: EXECUTION

- 3.1 Workmanship: All workmanship shall comply with the DOTD sections listed above.
- 3.2 Acceptance of Work: Work will not be acceptable if it does not meet the requirements for 100% payment, as indicated in DOTD.
- 3.3 Cleaning: After completion of paving operations, clean surfaces of excess of spilled materials in a workmanlike manner.

* * *

GRADING NOTE:

- ALL PARKING LOT GRADES GIVEN AT BOTTOM OF CURB. TOP OF CURB ELEVATIONS 6" HIGHER, TYP.



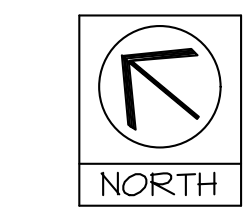
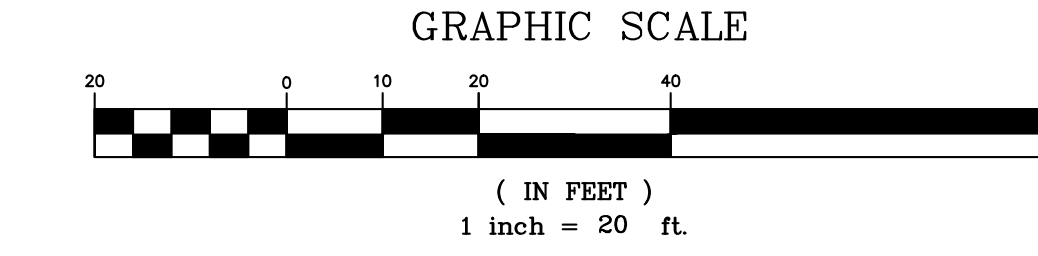
WATER NOTE:

- CONTACT BILLY PALMISANO WITH THE CITY OF SLIDELL PUBLIC UTILITY DEPARTMENT AT (985)646-4291 FOR WATER TAPS.

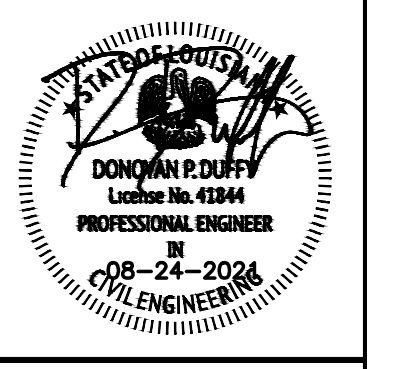
- 10/01/2021 PARKING LOT LOWERED 9" PER SLIDELL PERMITTING REQUIREMENTS.
- 10/01/2021 WATER LINE TIE IN MOVED FROM SERVICE LINE TO MAIN LINE.

INTERSECTION ADA IMPROVEMENTS TO BE MADE IN STATE PROJECT NO. H.014363, PER DOTD

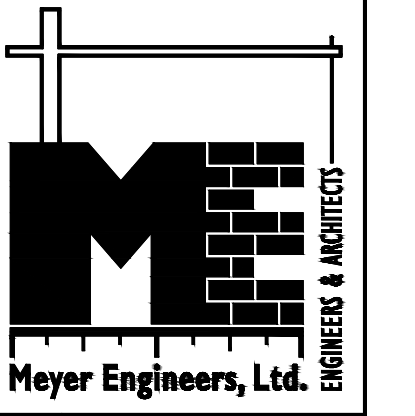
CONTRACTOR TO VERIFY 12" RCP (MAINTAIN CONNECTION TO EXIST. CATCH BASIN)



project no. 20-2066
 drawn AJE
 checked DPD
 date 08-17-2021
 revised 10-01-2021

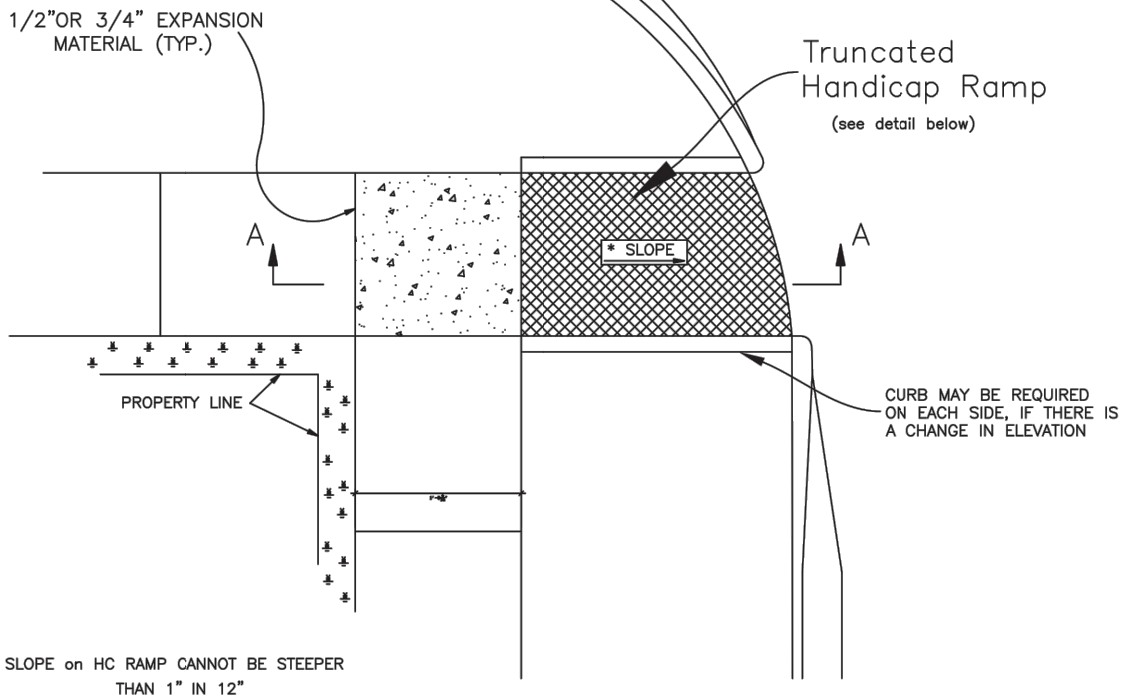


Meyer Engineers, Ltd.
 4937 Hearst Street . Suite 1B . Metairie, Louisiana 70001
 phone.504.885.9892 . fax.504-887-5056
 website.www.meyer-e-l.com



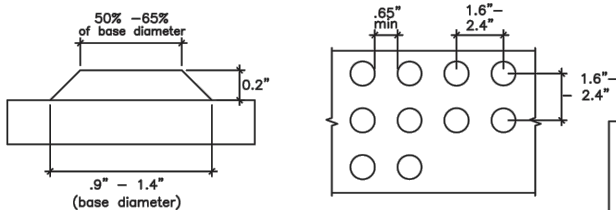
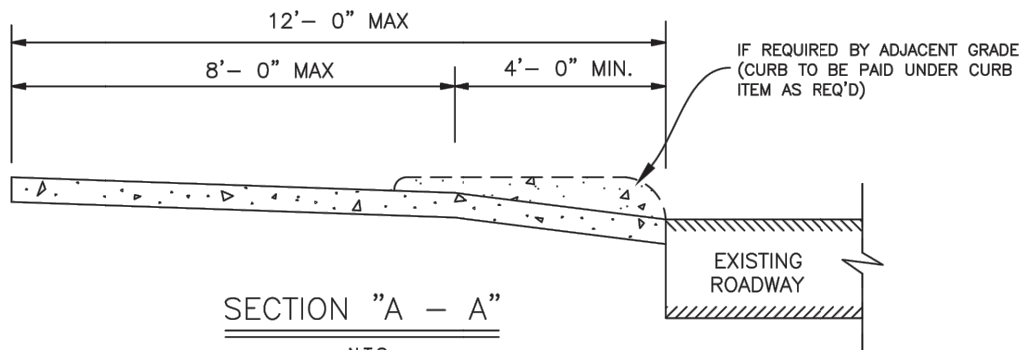
DRAINAGE & GRADING PLAN
SLIDELL LIBRARY (ROBERT BLVD)
NEW PARKING LOT
ST. TAMMANY PARISH GOVERNMENT, OWNER

sheet no.
6
 of ___ sheets



* SLOPE on HC RAMP CANNOT BE STEEPER THAN 1" IN 12"

HANDICAPPED CURB RAMP



The proposed rights-of-way guidelines, like the ADA and ABA Standards, address dome size, truncation, and spacing.



Handicapped Curb Ramp		
CITY OF SLIDELL ENGINEERING DEPT.		
Annual Maintenance Contract FY' 2021		
DRAWN BY: JMC	FILE No: 950-41G	SHT 3
Approved By: BAC	DATE: 3/10/2021	

Plot 1=1

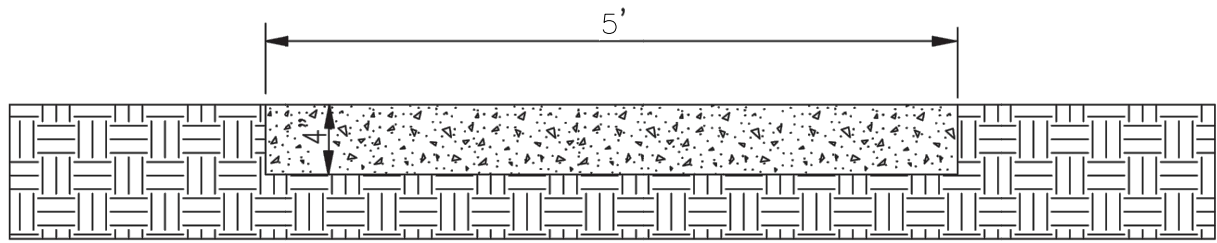
SK-01
Sheet no.
of sheets

SLIDELL STANDARD SIDEWALK DETAILS
SLIDELL LIBRARY (ROBERT BLVD)
NEW PARKING LOT
ST. TAMMANY PARISH GOVERNMENT, OWNER



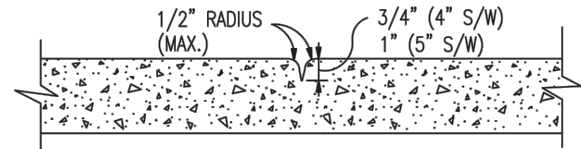
Meyer Engineers, Ltd.
 4937 Hearst Street . Suite 1B . Metairie, Louisiana 70001
 phone.504.885.9892 . fax.504-887-5056
 website.www.meyer-e-l.com

Project no.	202004
Drawn by	AMS
Checked by	DBD
Date	10/01/2021
Revised	

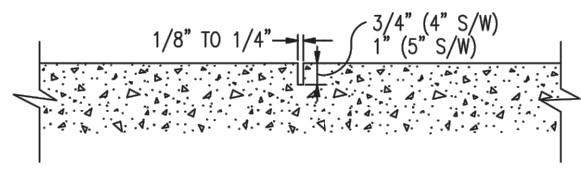


TYPICAL SIDEWALK

4" THICK SAND BASE



HAND TOOLED CONTRACTION JOINT
(MINIMUM SPACING = 4'-0")

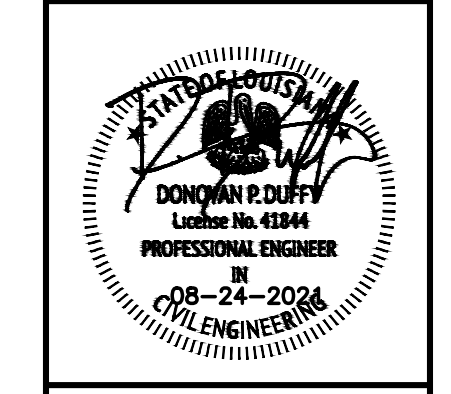


SAWED CONTRACTION JOINT
(MINIMUM SPACING = 4'-0")

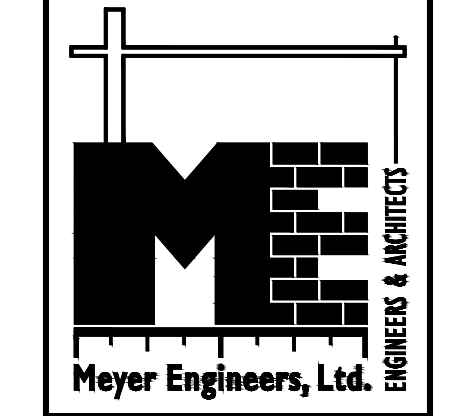
	SIDEWALK DETAILS		SHT 9
	CITY OF SLIDELL ENGINEERING DEPT.		
	Annual Maintenance Contract FY' 2021		
DRAWN BY: JMC	FILE No: 950-41G		
Approved By: BAC	DATE: 3/10/2021		

PLOT 1=1

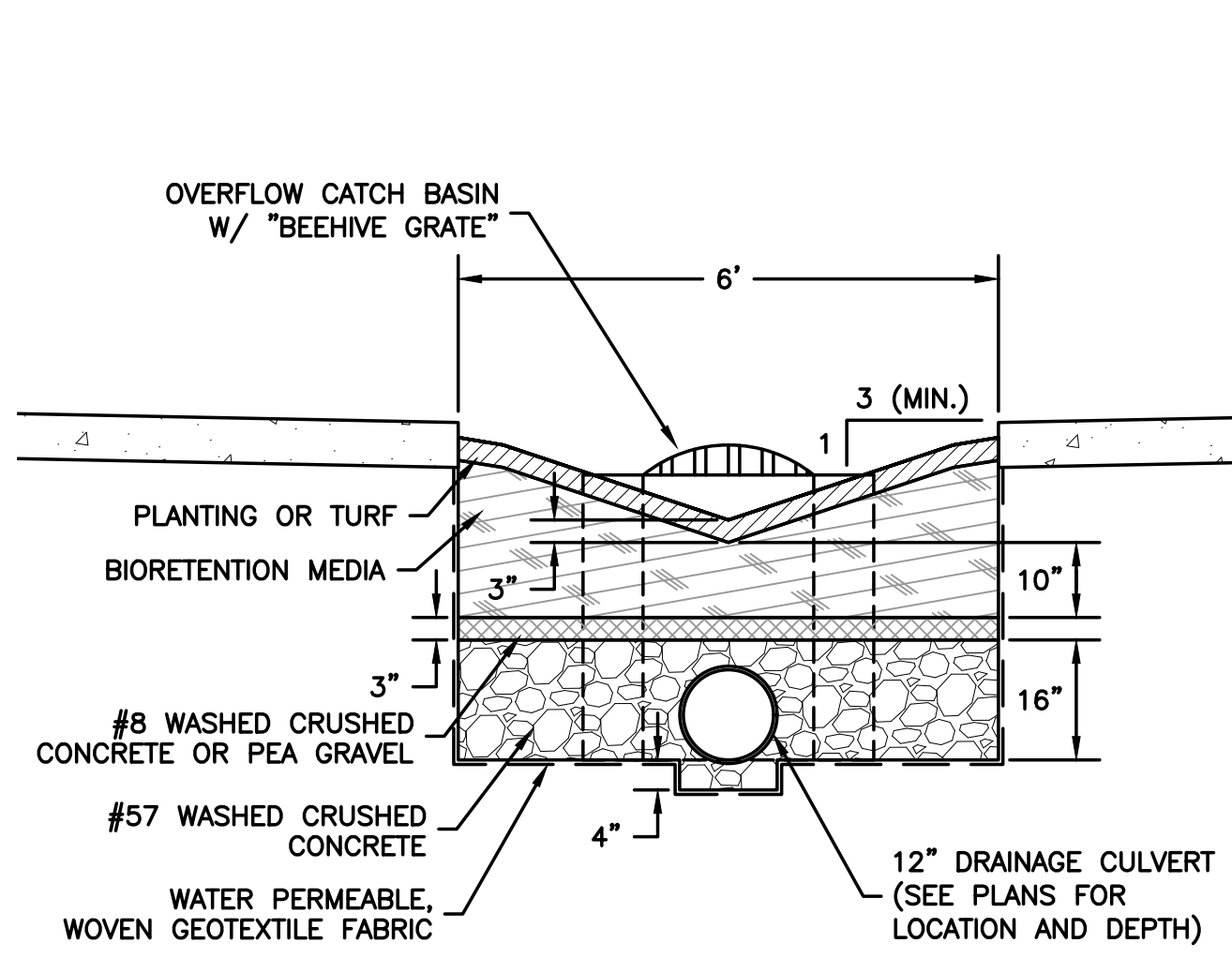
<p>SLIDELL STANDARD SIDEWALK DETAILS</p> <p>SLIDELL LIBRARY (ROBERT BLVD)</p> <p>NEW PARKING LOT</p> <p>ST. TAMMANY PARISH GOVERNMENT, OWNER</p>		<p>Meyer Engineers, Ltd.</p> <p>4937 Hearst Street . Suite 1B . Metairie, Louisiana 70001</p> <p>phone.504.885.9892 . fax.504-887-5056</p> <p>website.www.meyer-e-l.com</p>	<p>project no. 202004</p> <p>drawn: JMC</p> <p>checked: JMC</p> <p>date: 03/10/2021</p> <p>revised:</p>
--	--	--	---



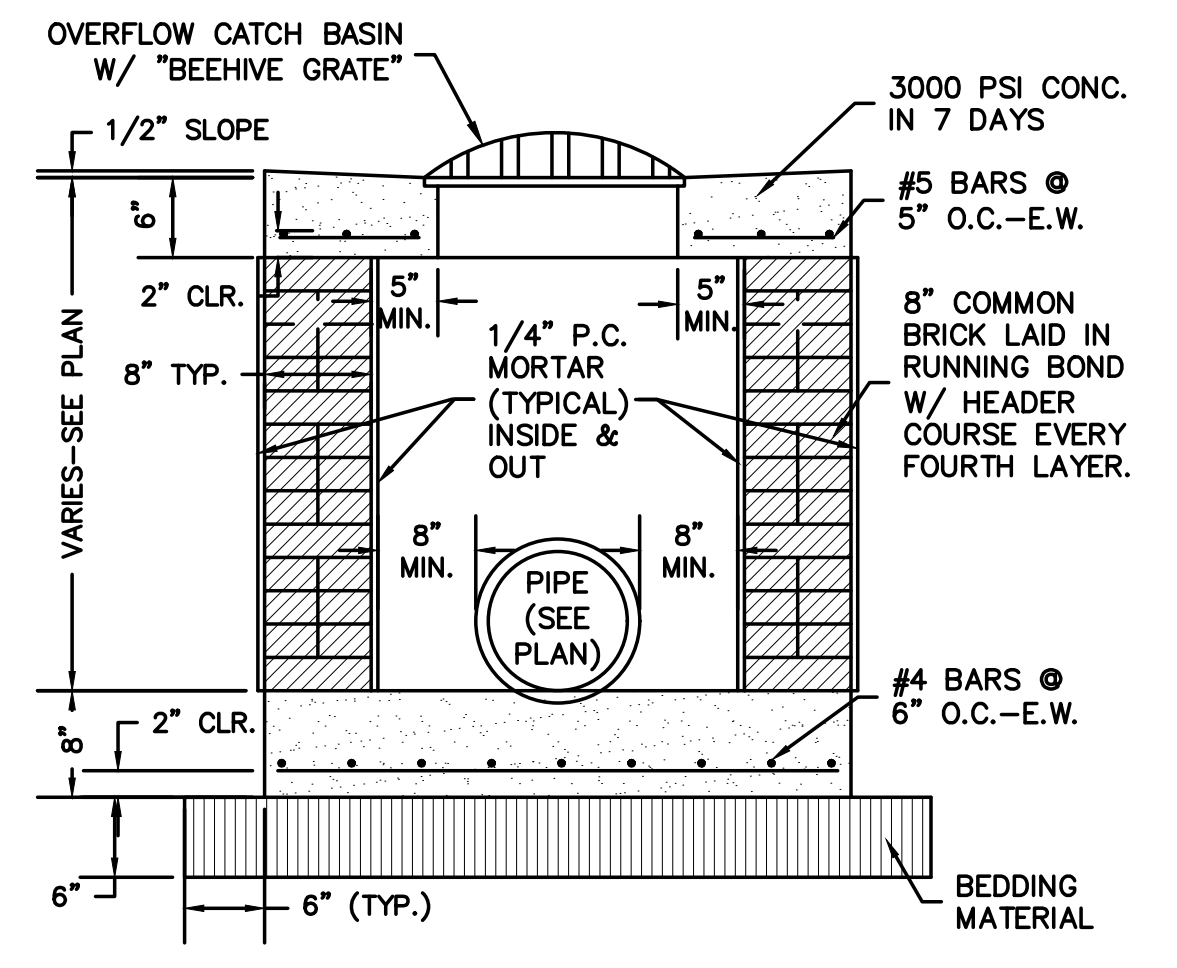
Meyer Engineers, Ltd.
 4937 Hearst Street . Suite 1B . Metairie, Louisiana 70001
 phone.504.885.9892 . fax.504-887-5056
 website.www.meyer-e-l.com



MISCELLANEOUS DETAILS
SLIDELL LIBRARY (ROBERT BLVD)
NEW PARKING LOT
ST. TAMMANY PARISH GOVERNMENT, OWNER

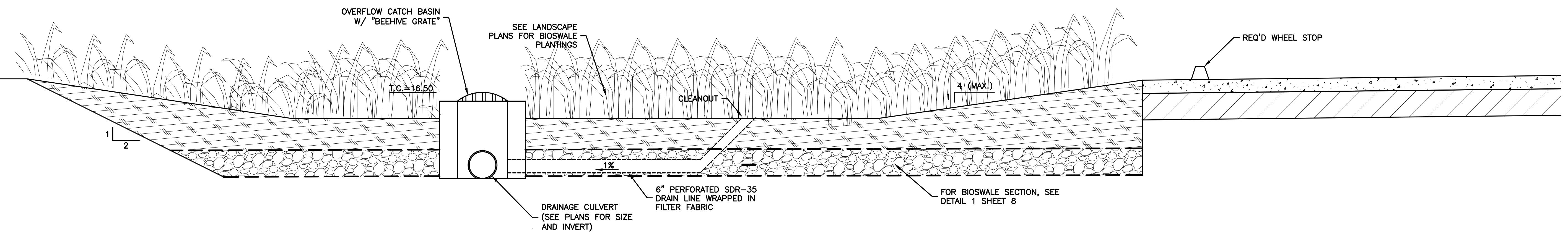


1 BIOSWALE SECTION
 T=2

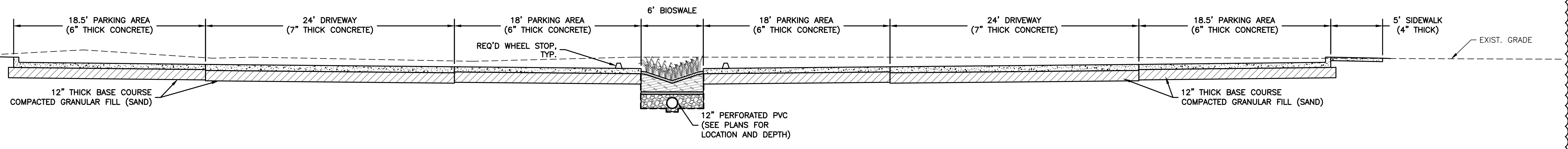


2 OVERFLOW CATCH BASIN
 NT.S.

NOTE: PREFABRICATED BOX TO MEET HS20-44 LOADING IS AN ACCEPTABLE ALTERNATE AS LONG AS THE TOP 2 COURSES OF BRICK ARE INCLUDED FOR FUTURE ADJUSTMENT



3 TYPICAL SECTION @ BIOSWALE
 T=2



4 TYPICAL PARKING LOT SECTION
 T=5

10/01/2021 PARKING LOT LOWERED 9" PER SLIDELL PERMITTING REQUIREMENTS.

Ellis Engineering, LLC

525 Brewster Rd. Madisonville, LA 70037 (504) 415-7670

Meyer Engineers, Ltd
4937 Hearst St.
Metairie, LA 70001

September 30, 2021

ATTN: Donovan Duffy

SUBJECT: Slidell Parking Lot
EE Job # 21007

Dear Sir:

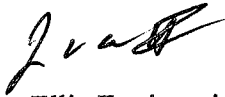
Please add the following to your next addendum:

The following manufacturers are recognized as capable of producing equipment equal to those specified and are approved for bidding:

Light fixture manufacturers

Gardco

Very truly yours,



Ellis Engineering, LLC
James W. Ellis II, P.E.



ST. TAMMANY PARISH

MICHAEL B. COOPER
PARISH PRESIDENT

September 29, 2021

Please find the following addendum to the below mentioned BID.

Addendum No.: 2

Bid#: 21-26-2

Project Name: Slidell Library Parking Lot

Bid Due Date: 10/12/2021

GENERAL INFORMATION:

- AD2.1 A mandatory pre-bid conference was held at **10:00 A.M. CST/CDT on Thursday, September 23, 2021**, on site at 555 Robert Boulevard, Slidell, LA 70458. Attached is the Meeting Memorandum and Sign-In Sheet numbered AD2-2 thru AD2-5.
- AD2.2 A non-mandatory site visit will be held from 1-3 P.M. on Tuesday, October 5, 2021, on site at 555 Robert Boulevard, Slidell, LA 70458. The purpose of this site visit will be to allow contractors to look at the existing conditions of the electrical room in which the electrical tie in will take place.
- AD2.3 Contractor Question and Answer:
Q. Will the license classification of “Building Construction” be allowed for bidding?
A. No. The project classification will remain “Highway, Street, and Bridge” only.

<< End of Addendum #2 >>

MEYER ENGINEERS, LTD.

MEMORANDUM

PROJECT NO: 20-2066

PROJECT NAME: Slidell Library Parking Lot

DATE: 09-23-2021 **BY:** Alec Simonson

PHONE CALL: **MEETING:**

NUMBER: _____ **LOCATION:** 555 Robert Blvd.

TO: _____ **ATTENDING:** See sign in sheet attached

COMMENTS:

Pre-Bid meeting notes:

- Richard Fields (STP) introduced the project and described the scope of work and the project time of 120 calendar days. Richard tells contractors that the STP will work with contractors as much as possible with an issues regarding weather delays and any change orders that may come up.
- Richard emphasized the importance of following the bid manual exactly when submitting bids in order to avoid being rejected, he also reminded contractors to acknowledge all addenda individually with their bids.
- Brandie Martin (STP) tells contractors to email all questions to “Procurement” and the questions will be distributed to STP and Meyer to provide answers by addendum. The email for “Procurement” is Procurement@stpgov.org.
- Brandie informs contractors that all addenda will be posted to the parish website and bid express, and she told contractors to make sure they are checking for any addendum posted.
- Contractors asked if the project was unit price or lump sum, Brandie informed contractors that the project is lump sum.

F:\WORDPROC\20-2000\20-2066\Addendum No. 2\20-2066 Prebid Meeting Memo.docx

- Contractors asked for an estimate for the project cost, Richard told them that this could be found on the parish website.
- Brandie informed contractors that the last day to ask questions was September 30 at 2 p.m.

DISTRIBUTION: RCM

Thursday September 23rd
2021

Day, Month, Date
Time

555 Robert Boulevard,
Slidell, LA 70458

Pre-Bid Sign-In Sheet
Slidell Library Parking Lot

	Name	Company	Email	Phone	Time In	Time Out
1	Richard Fields	STPG	rfields@STPG.NOLA	985 704469	9:35	10:15
2	Carmy Cazay	Beverly Coast	Carmy@Beverlycoast.com	985-264-8725	9:40	10:14
3	Lloyd Helburn	JAMES MARTE CONST. INC	JMCI@JMC1.COM	985-7963022	9:40	10:14
4	Charlie Gorkin	Kart's Construction Services	cgorkin@KartsConstruction.com	(985) 898-0932	9:55	10:13
5	Sean Marvel	Command Contractors	michelle@CommandIndustries.com	504 887-8795	9:40	10:14
6	Mike Wenzel	Wagner Trucking Inc	Mike.wagner@wagnertrucking.com	985 705-5993	9:56	10:15
7	Josh Jenkins	Nobles & Assoc	jac.jenkins@gmail.com	(985) 515-7805	9:56	10:15
8	Marvyn Andl	McPawold Const	marvyn.andl@mcandl.com	985-641-8821	9:57	10:15
9	Nathan Stibbs	Stibbs Nk Contractors LLC	stibbsnk@gmail.com	225 270 4351	9:57	10:14
10	Sam Moss	Cobalt Construction & Development	sam@cobalt-industries.com	337 578 0519	9:57	10:14
11	Alec Symanson	Meyer Engineers, Ltd.	asymanson@meyer-e-l.com	504-885-9892	10:00	10:15
12	Bardie Martin	STPG	bmartin@STPG.org	(985) 858-2520	10:00	10:15

555 Robert Boulevard,
Slidell, LA 70458

Pre-Bid Sign-In Sheet
Slidell Library Parking Lot

	Name	Company	Email	Phone	Time In	Time Out
1	Trey Romage	STPG	ctromage@stpgov.org	985-848-2520	10 AM	10:15
2						
3						
4						
5						
6						
7						
8						
9						
10						
11						
12						
13						
14						
15						
16						
17						



ST. TAMMANY PARISH

MICHAEL B. COOPER
PARISH PRESIDENT

September 16, 2021

Please find the following addendum to the below mentioned BID.

Addendum No.: 1

Bid#: 21-26-2

Project Name: Slidell Library Parking Lot

Bid Due Date: 10/12/2021

GENERAL INFORMATION:

NOTE: ***BID DATE & PRE-BID CONFERENCE DATE HAVE CHANGED.***

- AD1.1 Project Manual, NOTICE TO BIDDERS: Sealed bids will be received by the Department of Procurement, until **2:00 P.M., Tuesday, October 12, 2021**, and then opened and read publicly at that time by the Procurement Staff.
- AD1.2 Project Manual, NOTICE TO BIDDERS: A mandatory pre-bid conference will be held at **10:00 A.M. CST/CDT on Thursday, September 23, 2021**, on site at 555 Robert Boulevard, Slidell, LA 70458.
- AD1.3 Drawings, Sheet No. L-2, Landscape Drawings, Master Landscape Plan Materials Schedule – Alternate #1. Delete reference to Alternate #1. There is no alternate for this project.

<< End of Addendum #1 >>